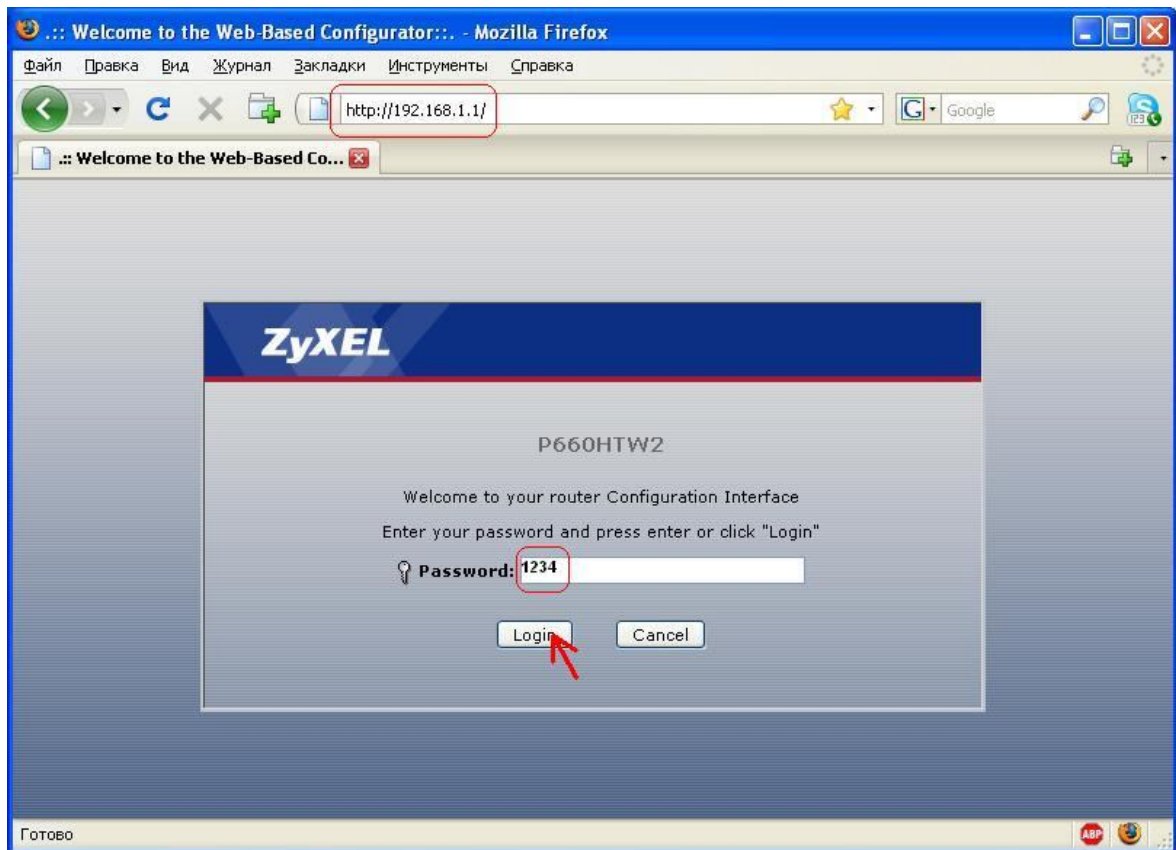
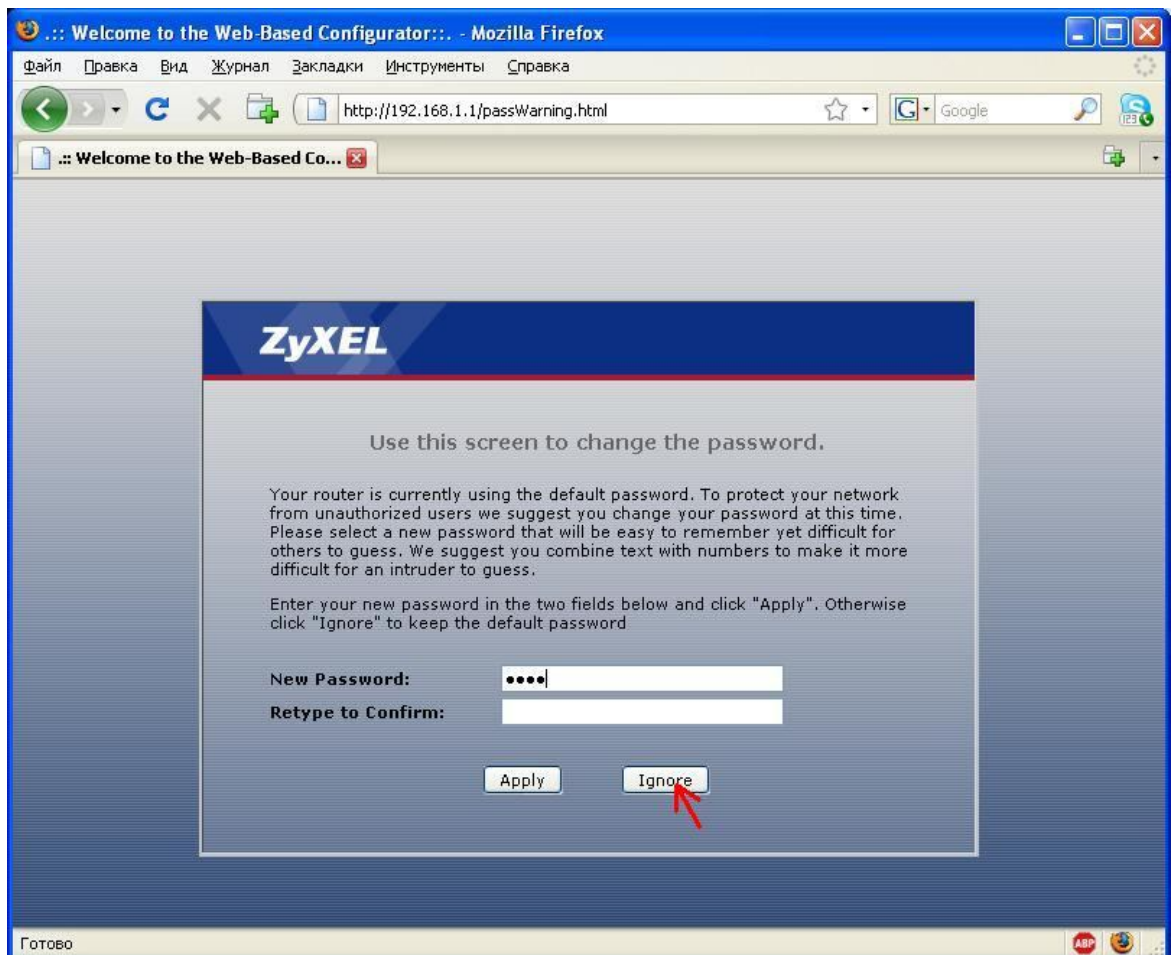


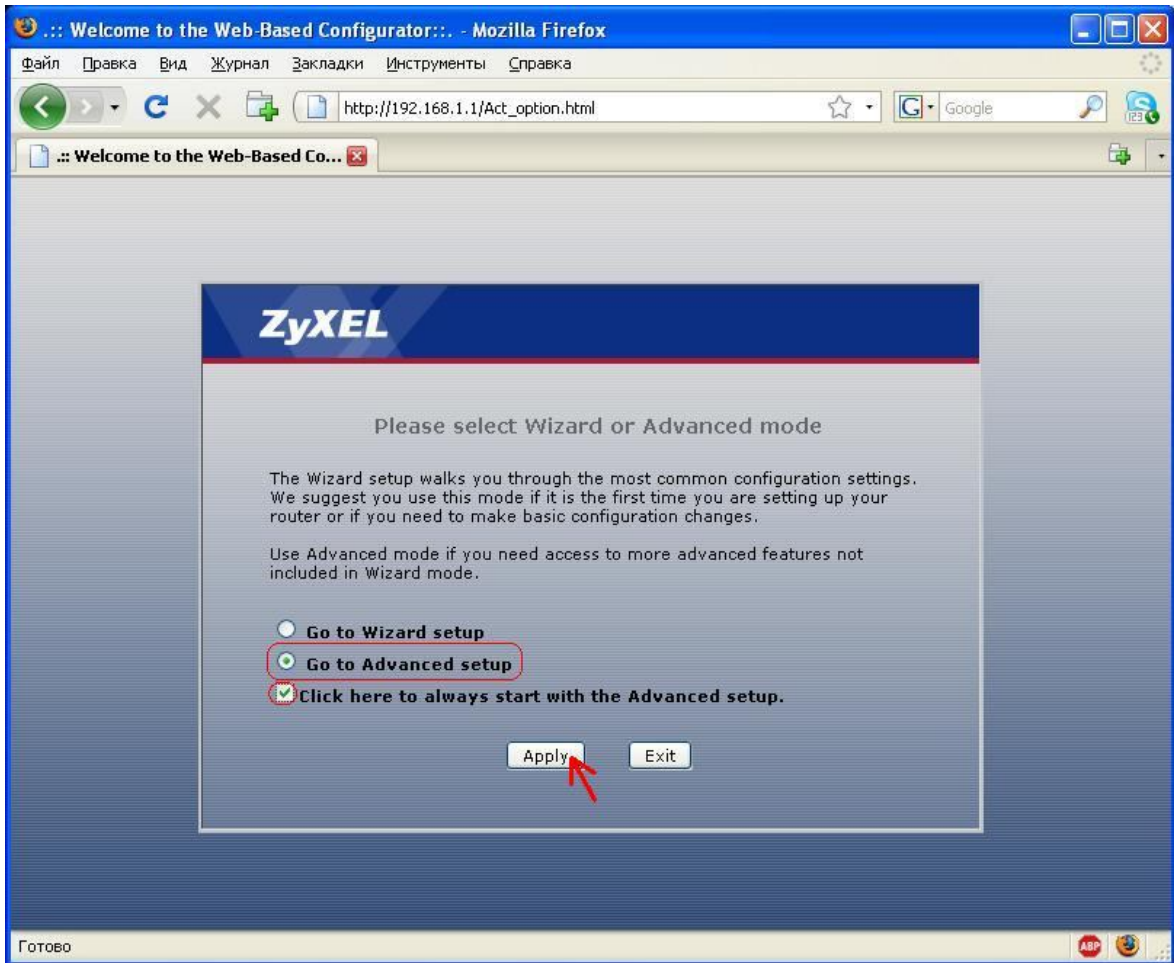
1. Подключите модем к компьютеру.
2. Запустите интернет-обозреватель. Откройте страницу настроек модема по адресу <http://192.168.1.1>. Введите пароль на устройство (по умолчанию – 1234)



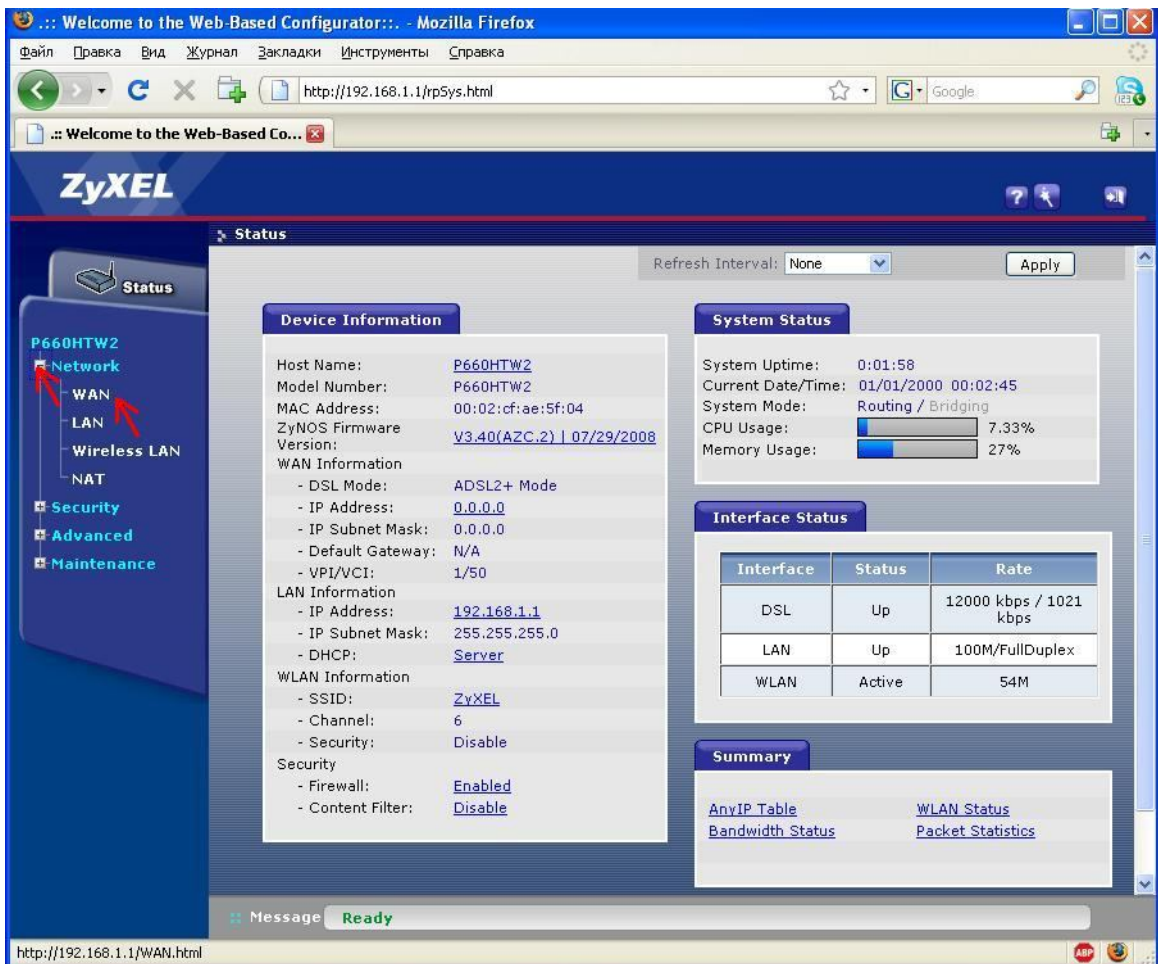
3. Поменяйте пароль по умолчанию (рекомендуем) или нажмите Ignore для пропуска этой процедуры.



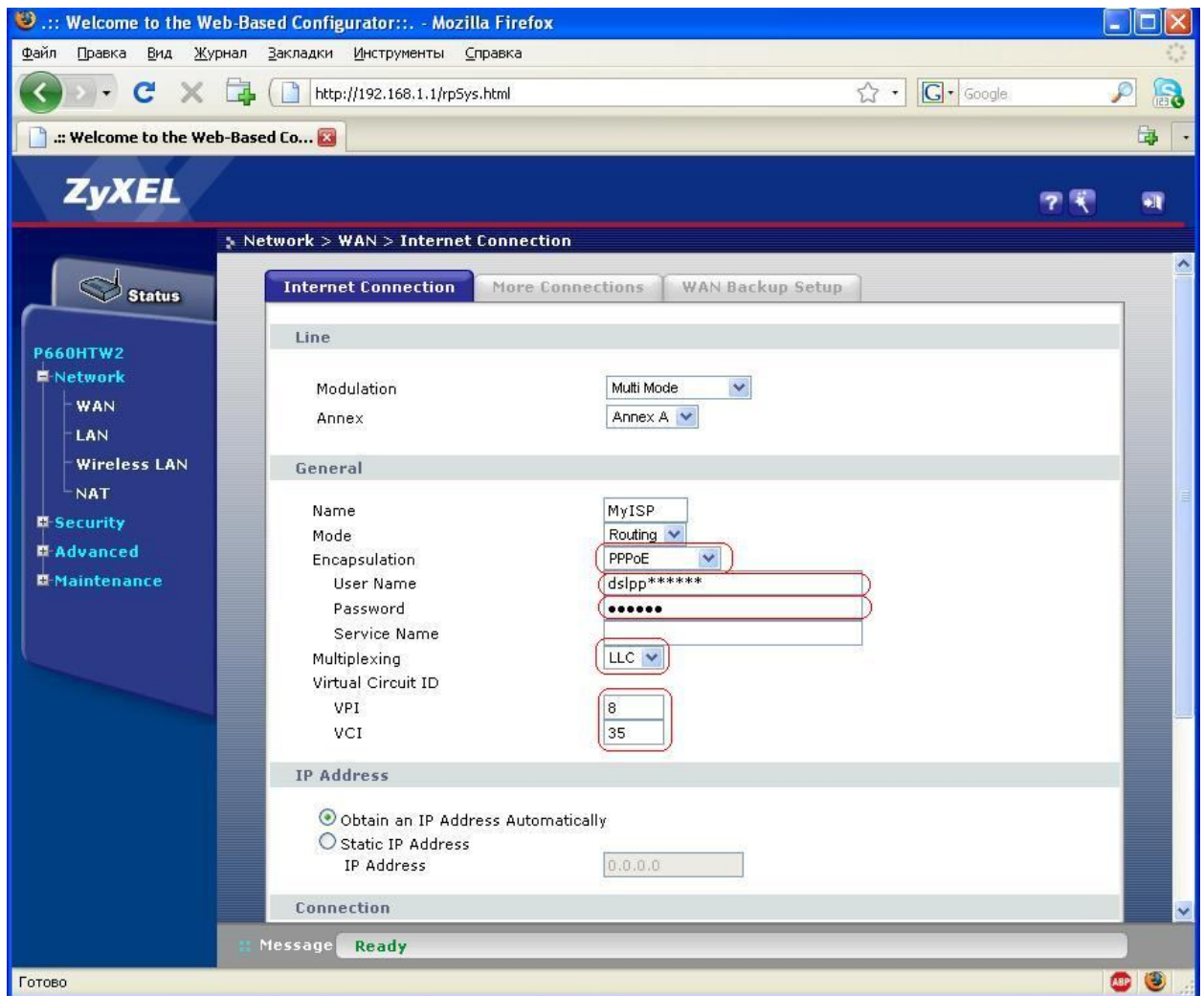
4. Перейдите в расширенный режим настроек (Go to Advanced setup).



5. Перейдите на страницу WAN во вкладке Network








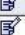







6. Выберите тип драйвера PPPoE, введите учетные данные – пользователь и пароль (login и pw с договорной карты xDSL), тип фрейма LLC, впишите настройки PVC – VPI -8, VCI – 35.



7. Для настройки IP-TV выберите пункт More Connection, Edit

The screenshot shows the ZyXEL web-based configurator interface in a Mozilla Firefox browser. The browser's address bar displays the URL `http://192.168.1.1/rpSys.html`. The page title is "Welcome to the Web-Based Configurator". The ZyXEL logo is visible at the top left. The main navigation menu on the left includes "Status", "Network", "Security", "Advanced", and "Maintenance". The "Network" menu is expanded, showing sub-items: "WAN", "LAN", "Wireless LAN", and "NAT". The "WAN" sub-menu is further expanded to show "Internet Connection", "More Connections", and "WAN Backup Setup". The "More Connections" tab is selected and highlighted with a red arrow. Below the tabs is a table with the following data:

#	Active	Name:	VPI/VCI	Encapsulation	Modify
1		Internet Connection	8/35	PPPoE	
2	-	--	--	--	 
3	-	--	--	--	 
4	-	--	--	--	 
5	-	--	--	--	 
6	-	--	--	--	 
7	-	--	--	--	 
8	-	--	--	--	 

Below the table are "Apply" and "Cancel" buttons. At the bottom of the interface, a message bar shows "Message Ready". The status bar at the very bottom of the browser window displays "Готово" (Ready) on the left and the ASP logo on the right.

8. Выберите тип драйвера Bridge, инкапсуляция RFC 1483, тип фрейма LLC, впишите настройки PVC – VPI -9, VCI – 99. Нажмите Apply.

